



Pieces of the Puzzle

© Bull Terrier Club of America, Inc.

No portion of this presentation may be duplicated without written permission of the Bull Terrier Club of America, Inc.

A decorative graphic on the left side of the slide, consisting of several interlocking puzzle pieces in a light blue color, arranged in a vertical column.

BUILDING A BETTER BULL TERRIER




2008 BTCA Judges Symposium


Phil Brodeur – Philgin

Alison Ibbitson – Baker Street

Naomi Waynee – MilleniumM

A decorative border on the left side of the slide, composed of several interlocking puzzle pieces in a light blue color. The pieces are arranged in a vertical column, with some overlapping and others slightly offset, creating a sense of depth and movement. The background of the slide is a solid, medium blue color.

Use the standard to
complete the puzzle.



Place the following photos
first through fourth
of each group of dogs
portraying the trait
as described in the standard.

1. "The head should be long, strong and deep right to the muzzle, but not coarse."

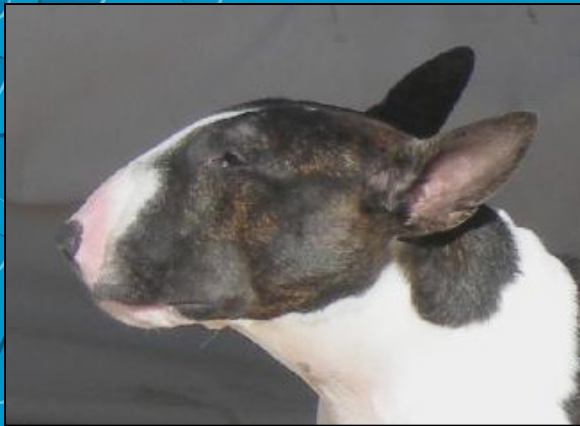
A.



B.



C.



D.



E.



2. Full face it should be oval in outline and be filled completely up giving the impression of fullness with a surface devoid of hollows or indentations, i.e., egg shaped.

A.



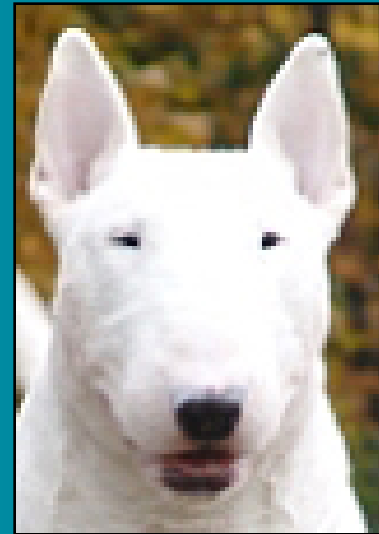
B.



C.



D.



3. “In profile it should curve gently downwards from the top of the skull to the tip of the nose”

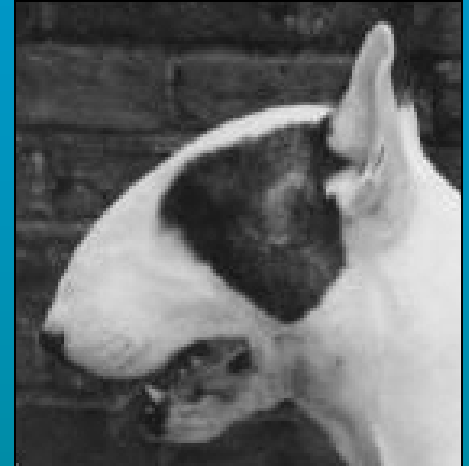
A.



B.



C.



D.



E.



F.

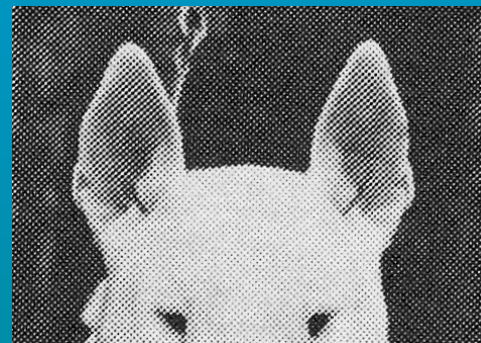


4. The forehead should be flat across from ear to ear.

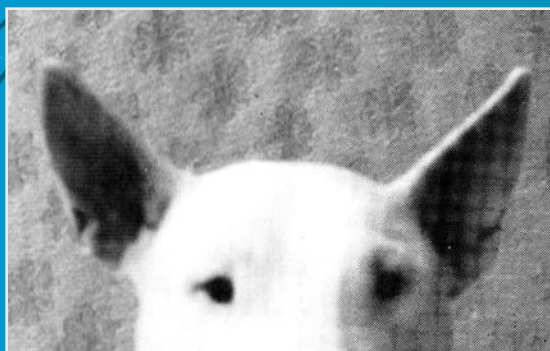
A.



B.



C.



D.



5. The distance from the tip of the nose to the eyes should be perceptibly greater than that from the eyes to the top of the skull

A.



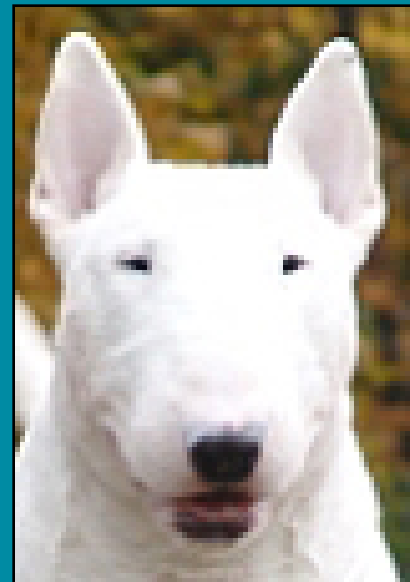
B.



C.



D.

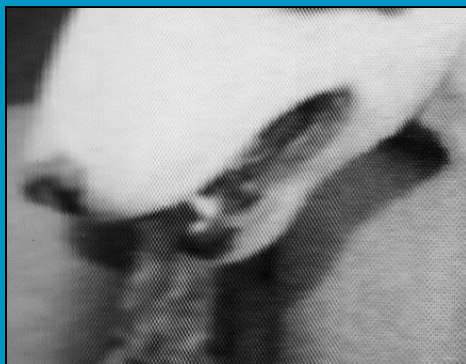


6. "The underjaw should be deep and well-defined."

A.



B.



C.



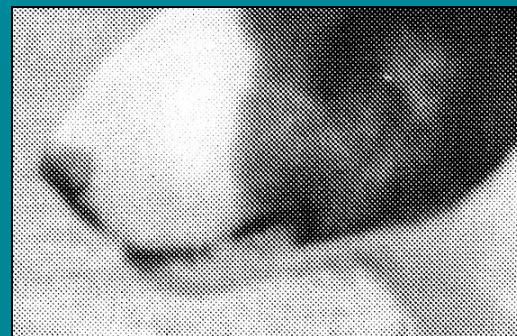
D.



E.

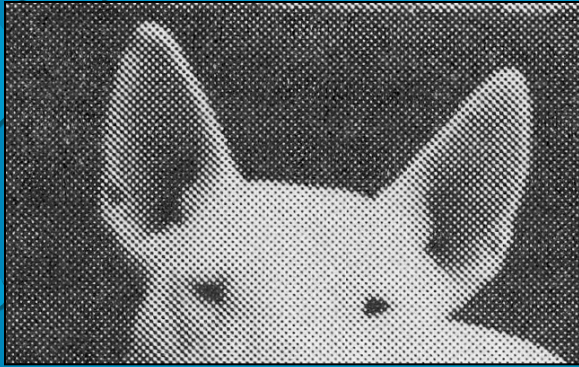


F.



7. "The ears should be small, strong and thin and placed close together."

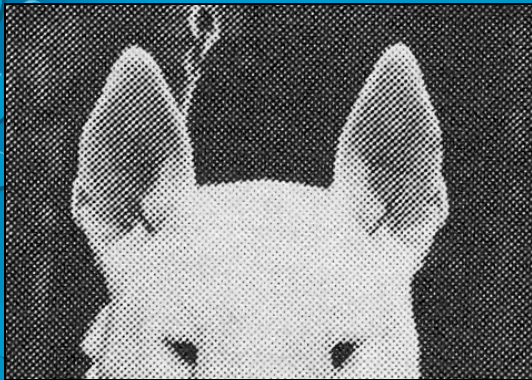
A.



B.



C.



D.



E.



8. “Eyes should be well sunken and as dark as possible, with a piercing glint and they should be small, triangular and obliquely placed; set near together and high up on the dog's head.”

A.



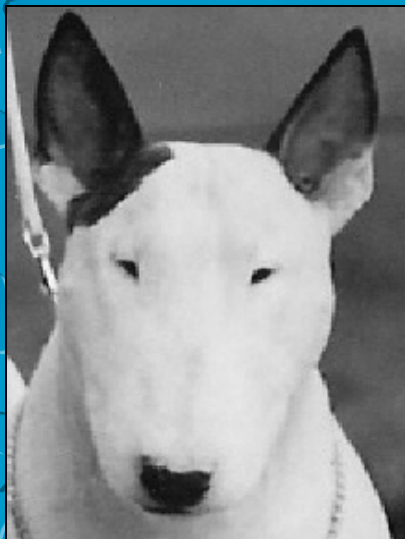
B.



C.



D.



E.



F.



9. “The neck should be very muscular, long, arched and clean, tapering from the shoulders to the head and it should be free of loose skin.”

A.



B.



C.



D.



E.

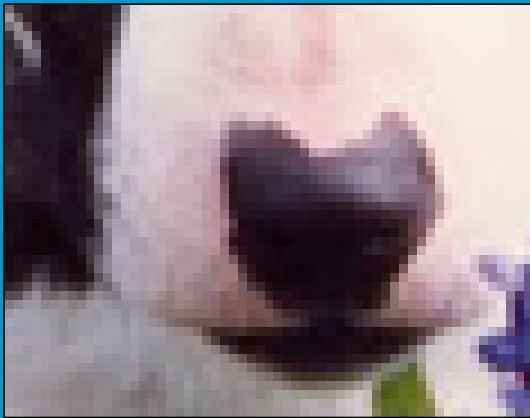


F.



10. The nose should be black,
with well-developed nostrils bent downward at the tip.

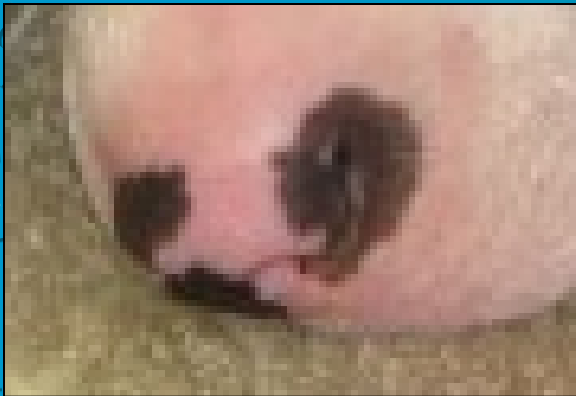
A.



B.



C.



D.



11. "The chest should be broad when viewed from the front ..."

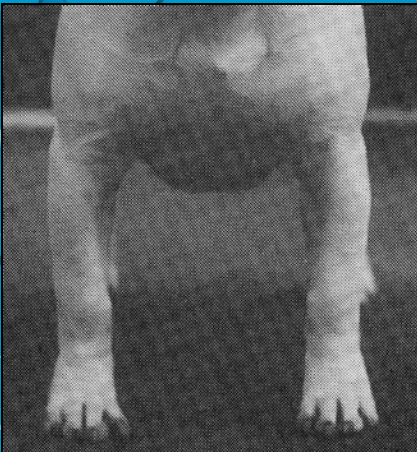
A.



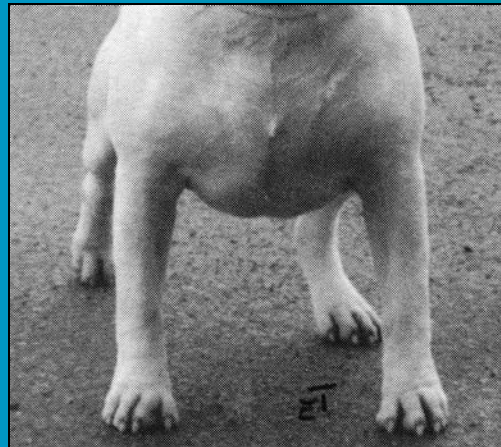
B.



C.



D.



E.

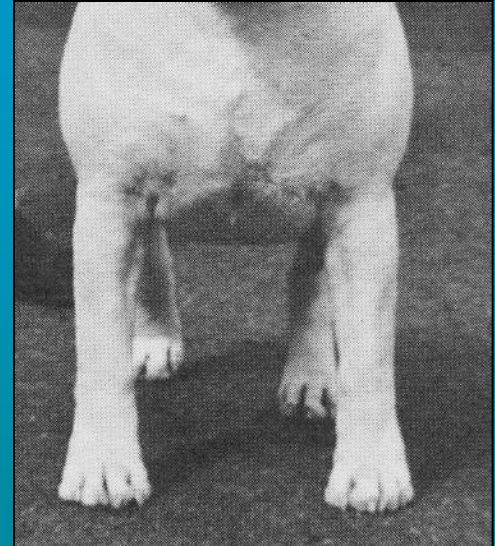


12. “The legs should be big boned but not to the point of coarseness; the forelegs should be of moderate length, perfectly straight, and the dog must stand firmly upon them.”

A.



B.



C.



D.



13. “The shoulders should be strong and muscular but without heaviness.”

A.



B.



C.

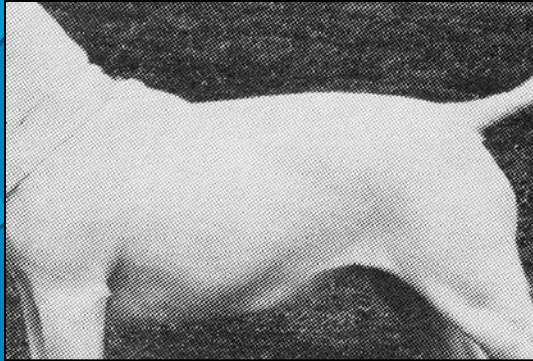


D.



14. “Behind the shoulders there should be no slackness or dip at the withers.”

A.



B.



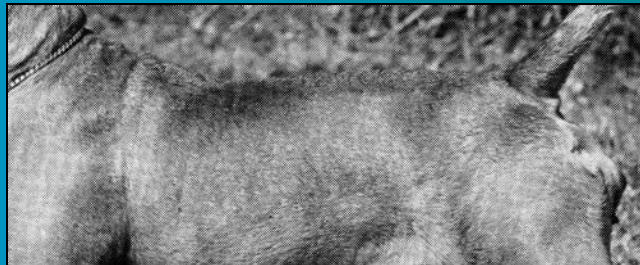
C.



D.



E.



15. "...the pasterns should be strong and upright. The feet round and compact with well-arched toes like a cat."

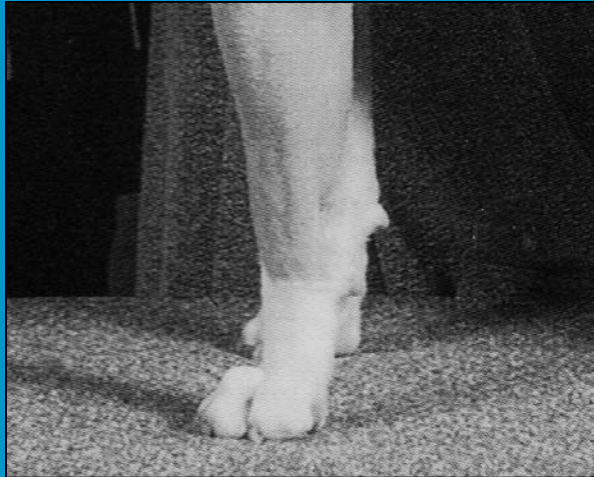
A.



B.



C.

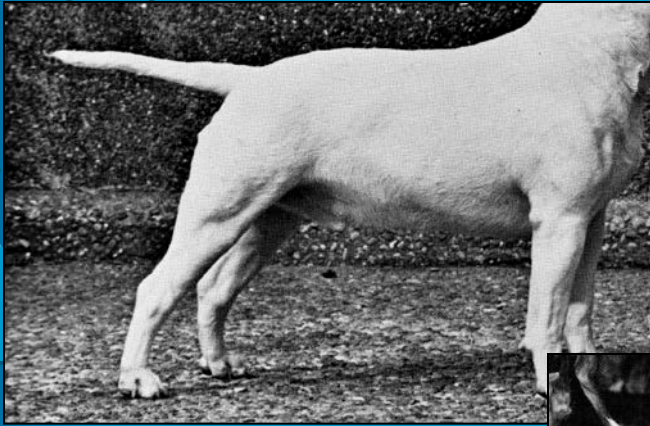


D.



16. "The back should be short and strong. The back ribs deep. Slightly arched over the loin."

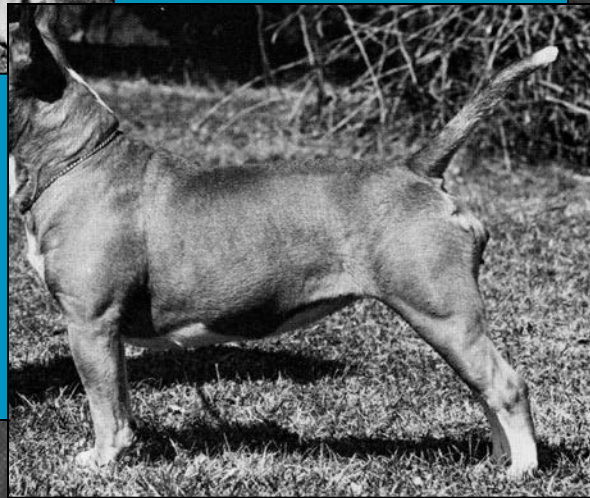
A.



B.



C.



D.



E.



17. “The thighs very muscular with hocks well let down. The stifle joint should be well bent with a well-developed second thigh. “

A.



B.



E.



C.



D.



18. “The tail should be short, set on low, fine, and ideally should be carried horizontally. It should be thick where it joins the body, and should taper to a fine point.”

A.



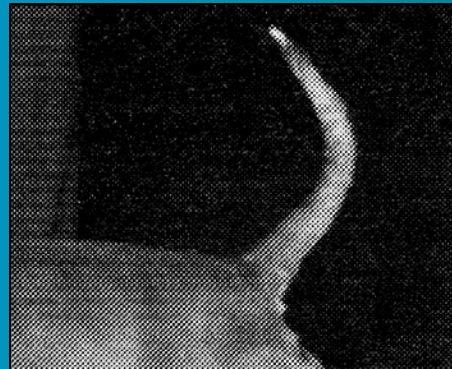
B.



C.



D.



E.





The End



	First	Second	Third	Fourth
1.	B	D	A	C
2.	A	D	B	C
3.	A	C	F	E
4.	D	A	B	C
5.	C	D	A	B
6.	F	A	E	C
7.	C	D	A	E
8.	C	D	F	A
9.	A	D	E	C
10.	A	D	C	B
11.	E	C	D	B
12.	B	C	D	A
13.	A	D	C	B
14.	C	B	D	A
15.	C	B	D	A
16.	E	A	C	B
17.	E	D	A	C
18.	A	E	C	B